

Transferring data from the PAT400 series to Powersuite

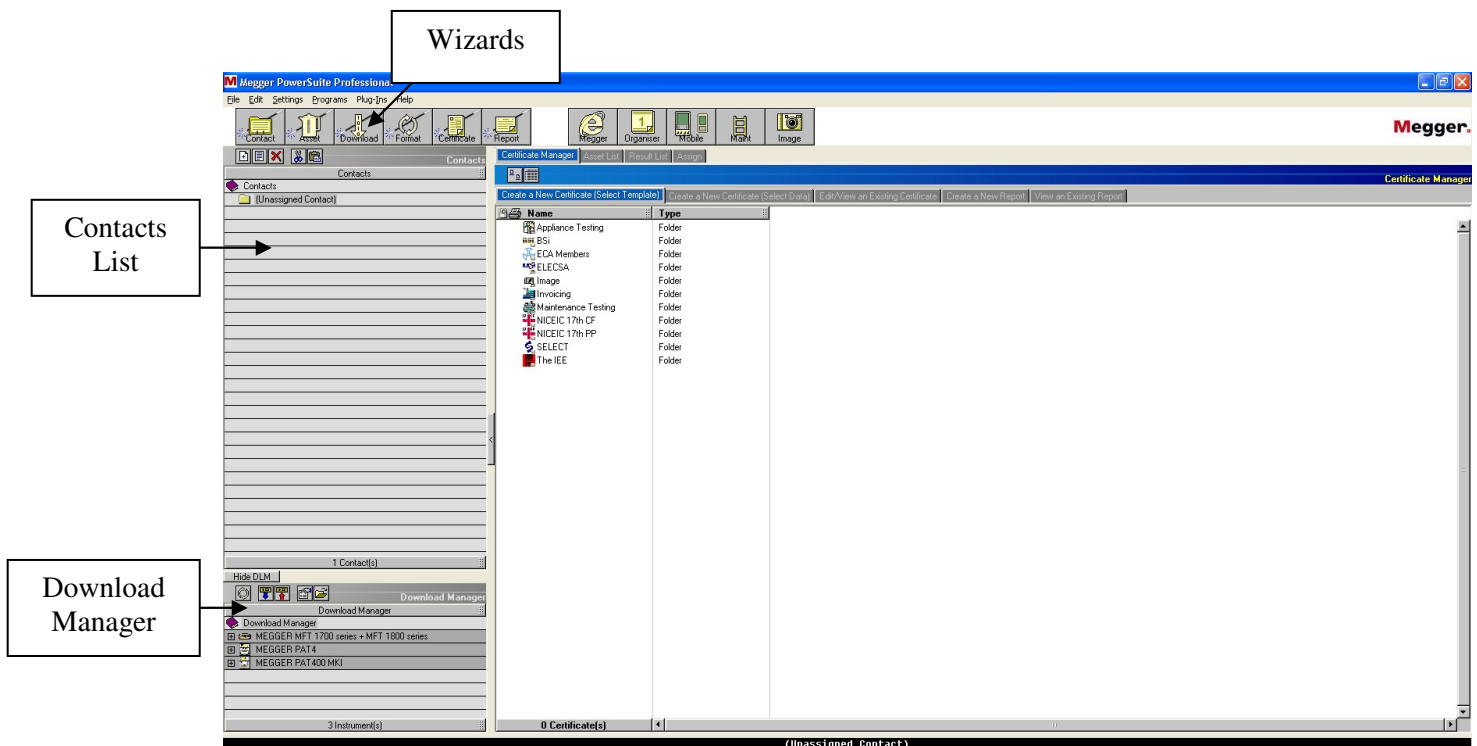
To enable the transfer of data from the PAT tester into Powersuite you will have to retrieve the data from the PAT tester as a .db file. Powersuite has a wizard to simplify the downloading process from .db files and these can then be used to upload data back onto the PAT at a later date.

Step 1-

Firstly the data has to be copied onto a USB memory stick in the .db format. Navigate to the 'Data' tab and select 'Backup to USB'. Enter a name for the file (max 8 characters) and push ok.

Step 2-

Open Powersuite on your PC/Laptop



Step 3-

Along the top of the screen there are buttons for inbuilt wizards. Select 'Download'. This will start the wizard for downloading the results from your USB memory stick.

Step 4-

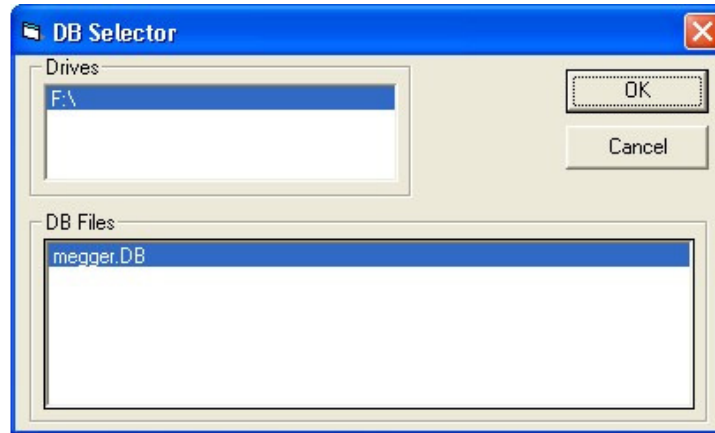
Select Megger PAT 400 MKI then click next.

Step 5-

Insert the USB memory stick into the USB socket of the PC/Laptop, and click 'Connect...' (if a window for the pen stick automatically opens this can be closed or minimized)

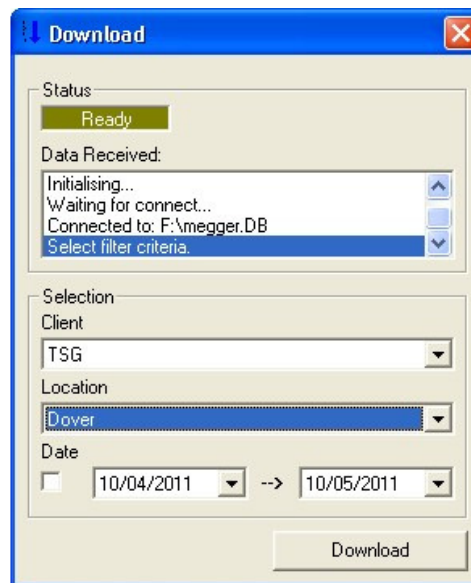
Step 6-

A new window will open with two boxes as shown below, the top box is called 'Drives' and the lower one is called 'DB Files'. From the top box select the drive for the USB memory stick being used, and from the lower box choose the .db file you wish to download, and then click 'Ok'.



Step 7-

From this next window, specific clients and locations can be selected to be downloaded. The selection can set to (All) which will download all clients and locations from within the .db file. If only a specific client/location is needed, then select the required client using the drop down menu, and then the location from the drop down menu (client has to be selected before a location shows). Once ready click 'Download'.



Step 8-

The download is now complete. Downloading further clients or locations can be carried out by clicking 'Back'. If you do not wish to transfer further data, just click 'Next'.

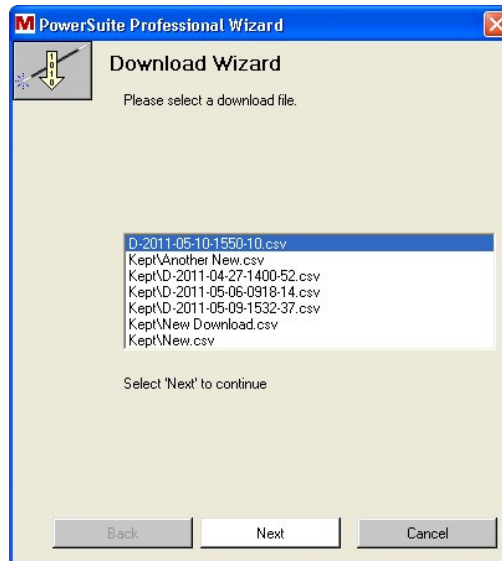
Step 9-

The Wizard will now ask if you would like to create contacts for this data. If you wish to create contacts select yes, and then click next (go to step 10).

If you do not wish to create contacts select, select no and then click next. This will take you to the formatting stage of the wizard (go to step 13).

Step 10-

If you have selected yes, the wizard will create a client and location for the data to be assigned to. The wizard will show a window with a list of the data currently held on Powersuite, which will contain the download you just made, as shown below. Select the data that was just downloaded, which will be represented by a D followed by the date and time of the download in the format 'yyyy-mm-dd-hhmm-ss', and click 'next'.



Step 11-

The wizard will show a window of all the clients and locations within the file. Select the required client(s) and location(s), and click 'next'. Multiple clients and locations can be selected at this stage.

Step 12-

Next the wizard will ask what company you wish to set these clients and locations to. Select the required company, and click next.

Step 13-

The client and location will now have been created. Click 'next' to continue.

Step 14-

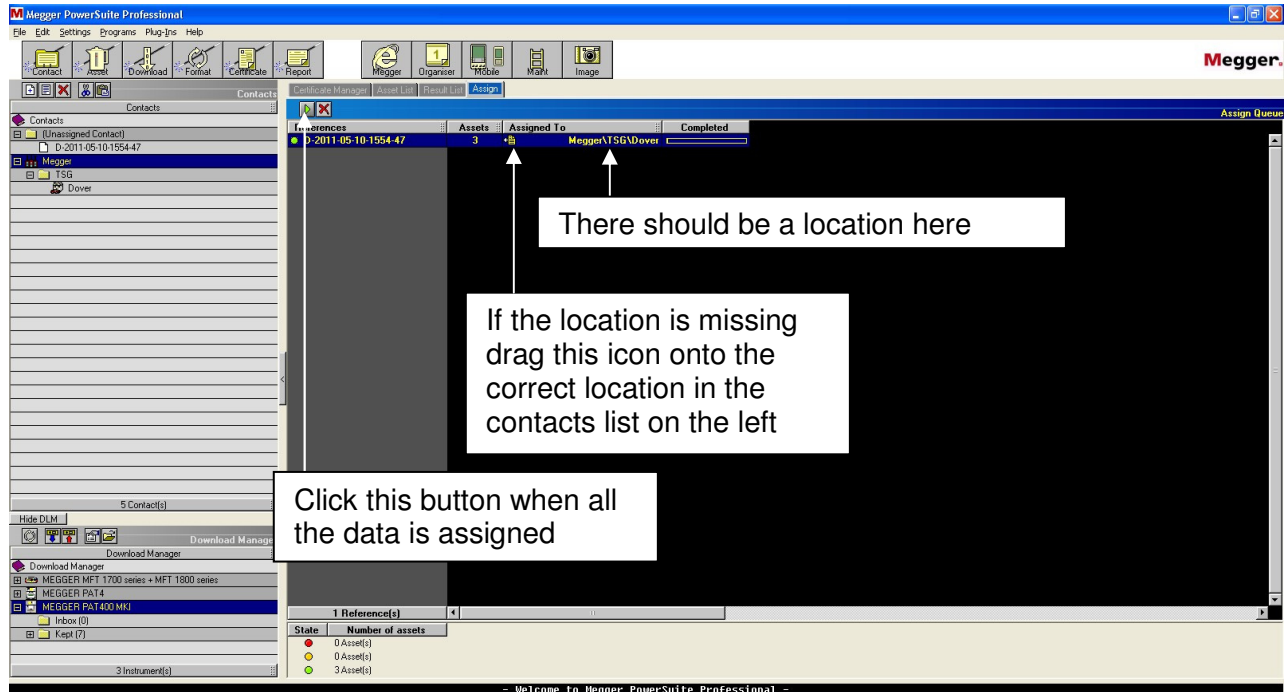
The wizard will now ask you to format the downloaded files. Select the downloaded file and click 'next'. The formatting stage can take a few minutes depending on the number of assets being formatted, so please be patient and wait for the process to finish.

Step 15-

If there are more downloaded results you wish to format, click 'back' and repeat the formatting process. Once all required results are formatted click 'Finished'.

Step 16-

You will now be returned to the main Powersuite window, the right hand of the screen has a black background with a list of the results data to be assigned. The data will already be assigned to the correct client and location by the wizard. If the file has not been successfully assigned to a location, drag the yellow file icon from within the 'Assigned To' column to the correct client and location in the list to the left, this will put the name of the client and location in the 'Assigned To' column. Once all results have been correctly assigned click the green arrow to finalise the process.



Step 17-

The data will now be downloaded and assigned to the client and location and will be available for creating a new certificate.