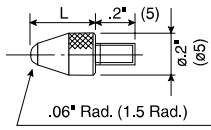


# Contact Points

Optional Accessories for Digimatic and Dial Indicators and Linear Gages

## ø.118" (ø3mm) Ball point

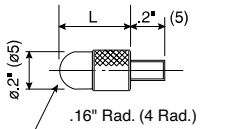


4-48UNF				
L	Carbide	Sapphire	Ruby	Plastic
.25"	21BZB005*	—	—	—
.28"	—	—	—	902018
.3"	131262	131263	131264	—
.6"	131265	131266	131267	—
1"	131268	131269	131270	—

M2.5 x 0.45mm				
L	Carbide	Sapphire	Ruby	Plastic
7.3mm	901312*	—	—	901994
8mm	120045	120046	120047	—
15mm	120049	120050	120051	—
25mm	120053	120054	120055	—

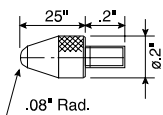
\*Furnished with standard metric dial indicators.

## Shell point



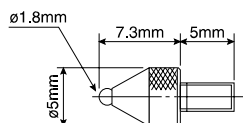
4-48UNF		M2.5 x 0.45mm	
L	Order No.	L	Order No.
3/32" (.094")	193697	5mm	101386
5/32" (.156")	101184	10mm	101118
1/4" (.25")	21AAA031	15mm	137393
3/8" (.375")	21AAA032	20mm	101387
1/2" (.5")	101185	25mm	101388
5/8" (.625")	21AAA033	30mm	21AAA254
3/4" (.75")	101186		
7/8" (.875")	21AAA034		
1"	101187		
1 1/4" (1.25")	21AAA035		
1 1/2" (1.5")	21AAA036		
1 3/4" (1.75")	21AAA037		
2"	21AAA038		
2 1/4" (2.25")	21AAA039		
2 1/2" (2.5")	21AAA040		
2 3/4" (2.75")	21AAA041		
3"	21AAA042		

## ø.16 Ball Point



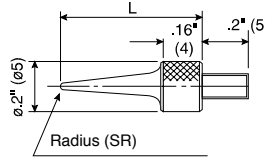
4-48UNF	
Order No.	
21BZB005	

## ø1.8mm Ball Point



M2.5 x 0.45mm	
Order No.	
101122	

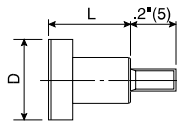
## Needle point



4-48UNF		
L	Order No.	SR
.6"	21AAA030	.016"
1"	21AAA046	.016"
1 1/2"	21AAA047	.016"
2"	21AAA048	.016"

M2.5 x 0.45mm		
L	Order No.	SR
15mm	101121	0.4
17mm	137413	0.2

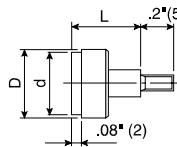
## Flat point



4-48UNF		
D	L	Order No.
Ø1/2"	3/8"	101188
Ø3/8"	3/8"	101189

M2.5 x 0.45mm		
D	L	Order No.
Ø10mm	10mm	101117

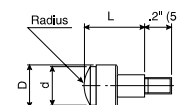
## Flat-point, Carbide tip



4-48UNF			
D	d	L	Order No.
Ø.2"	Ø.17"	.2"	131259
Ø.27"	Ø.25"	.4"	131260
Ø.41"	Ø.37"	.4"	131261

M2.5 x 0.45mm			
D	d	L	Order No.
Ø5.2mm	Ø4.3mm	5mm	120041
Ø7mm	Ø6.5mm	10mm	120042
Ø10.5mm	Ø9.5mm	10mm	120043

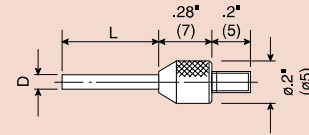
## Spherical-point, Carbide tip



4-48UNF				
D	d	Radius	L	Order No.
ø.2"	ø.17"	.2"	.2"	131273
ø.27"	ø.16"	.16"	.4"	131274
ø.41"	ø.37"	.4"	.4"	131275

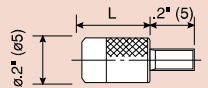
M2.5 x 0.45mm				
D	d	Radius	L	Order No.
ø5.2mm	ø4.3mm	5mm	5mm	120058
ø7mm	ø6.5mm	7mm	10mm	120059
ø10.5mm	ø9.5mm	10mm	10mm	120060

## Needle point, Carbide tipped



4-48UNF			M2.5 x 0.45mm		
D	L	Order No.	D	L	Order No.
ø.018"	.12"	131281	ø0.45mm	2.5mm	120066
ø.04"	.12"	131280	ø1mm	2.5mm	120065
ø.06"	.5"	131279	ø1.5mm	13mm	120064
ø.078"	.04"	131271	ø2mm	1mm	120056
			ø2mm	8mm	137257

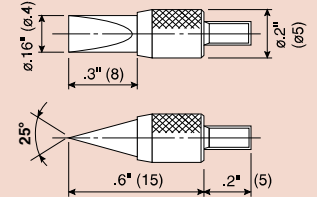
## ø.2" (ø5mm) Flat point



4-48UNF	
L	Order No.
5/16"	133017
1/2"	21AAA043
3/4"	21AAA044
1"	21AAA045

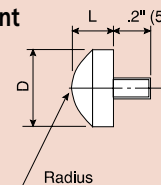
M2.5 x 0.45mm	
L	Order No.
8mm	131365

## Knife-edge point, Carbide tipped



4-48UNF		M2.5 x 0.45mm	
Order No.		Order No.	
131282		120067	

## Spherical point



4-48UNF			
D	L	Radius	Order No.
ø.5"	.125"	.28"	101205
ø.375"	.09375"	.35"	101204

M2.5 x 0.45mm			
D	L	Radius	Order No.
ø10mm	5mm	7mm	101119