

The BAKER Series B50000 of Digital Pressure Gauges includes the following models: B50015 (0-15 psi), B50030 (0-30 psi), B50100 (0-100 psi), B50500 (0-500 psi), B51000 (0-1000 psi) and B53000 (0-3000 psi).



Product Quality

This product has been calibrated during the manufacturing process to meet stated product specifications. If a certificate of calibration is required please contact the nearest authorized BAKER distributor or authorized Service Center. Please note an additional fee for this service will apply.

Safety

- Fully inspect the gauge to make sure that there are no fragments of packing material present inside the pressure sensing port.
- Do not use if product is damaged.
- Before installation, ensure that the maximum pressure in your system is within the described range of the digital pressure gauge.
- Make sure that the allowable maximum operational temperature of the gauge is not exceeded.
- During Installation, ensure that the piping is fully depressurised.
- The digital gauge should be mounted just like an analog gauge.
- While threading in the device, torque should only be applied to the gauge socket and never to the gauge case as it may result in damage and/or inaccurate readings.

- NPT threads require the use of a suitable thread sealant and must be tightened very securely to ensure a leak tight seal.
- After installation, perform a zero calibration.
- Dismantling your instrument other than for the purpose of replacing the batteries may cause damage that will not be covered under the manufacturer's warranty. Servicing should only be provided by an authorized Service Center.

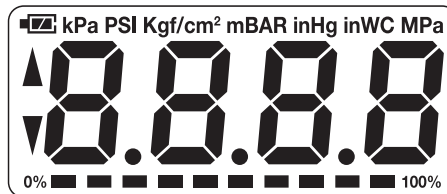
Included

Digital Pressure Gauge and Batteries

Optional Accessories

B5-BOOT, Protective Boot for Digital Pressure Gauge

Display Description



Pressure Units

kPa PSI Kg/cm² mBAR inHg inWC MPa

Battery Life



Pressure Progress Bar



Operating Instructions

Power ON/OFF

Turn the meter on by pressing the button. To turn the meter off, press and hold the button for approximately 2 seconds.

Selecting the Engineering Units of Measure

Continuously press the button to scroll through the list of engineering units.

Zero Calibration

While piping is fully depressurised, press and hold the button for approximately 4 seconds to perform a zero calibration.

Note: It is recommended to perform a zero calibration before each use and should not be done when pressure is applied.

Backlight

After powering the meter ON, press the button to activate the backlight for only 20 seconds. Press and hold the button for approximately 3 seconds to keep the backlight on. Press the button again to turn the backlight off.

Adjusting the Filter Factor

Press both the and buttons simultaneously and "r-05" will appear on the LCD display indicating that the current Filter Factor is set at 5. This number can be updated between 01 and 10 by pressing the button. Press button to confirm your selection and resume normal operation.

Note: The smaller the Filter Factor, the faster the measurement on the LCD will update. A larger Filter Factor will provide a slower and more stable measurement change.

Battery Replacement

When the low battery indicator appears on the display, the batteries should be replaced. Remove the battery cover on the back and insert 2 new AAA batteries.

Warning and Error Messages

No.	Code	Description
1	E-E	Sensor Failure
2	E-H	Over-pressure has occurred with possible sensor failure
3	E-P	The pressure gauge has had it's calibration corrupted or destroyed; the gauge will require calibration.

Features and Specifications

This digital pressure gauge with integral bar graph features 1% accuracy, backlighting for easy reading and up to 7 selectable engineering units allowing one gauge to be used in a variety of pressure applications. Displays real-time pressure with short response times and excellent long-term stability. The all Stainless Steel wetted parts make these gauges suitable for a wide variety of industrial liquids and gaseous mediums.

Specifications

Accuracy	1% F.S.
Long-term Stability	0.5% F.S./Year
Sampling Rate	3x/Sec.
Overload Capacity	< 1500PSI: 150%, ≥1500PSI: 120%

Medium & Materials

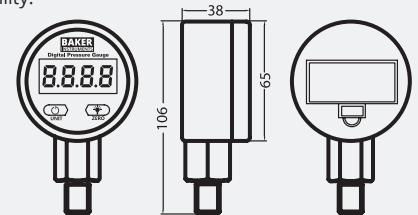
Service	Liquids & compatible gases
Wetted Materials	304 SS
Housing Materials	304 SS

General Specifications

Process Connection	1/4" male NPT
Display	4-digit LCD
Backlit Display	Yes
Low Battery Indicator	Yes
Power Supply	2 x AAA Batteries
Battery Life	12-18 months
Product Certifications	IP64
Electromagnetic Compatibility	EN61326
Operating Temp.	23 to 104°F (-5 to 40°C)
Dimensions	2.56" Outside Diameter x 1.50" Deep
Weight	8.82oz (250g)

Features

- Compatible with air, liquids & gases
- 4-digit LCD display with backlight provides clear reading
- 304 Stainless Steel wetted materials and housing
- Pressure progress bar graph display
- Push-button zero



Model	B50015	B50030	B50100	B50500	B51000	B53000
Measuring Ranges	0-15.00 psi 0-1.055 kgf/cm ² 0-30.5 inHg 0-103.4 kPa 0-416 in w.c. 0-1034 mbar 0-0.103 MPa	0-30.0 psi 0-2.109 kgf/cm ² 0-61.1 inHg 0-206.8 kPa 0-831 in w.c. 0-2068 mbar 0-0.206 MPa	0-100.0 psi 0-7.03 kgf/cm ² 0-203.6 inHg 0-690 kPa 0-0.689 MPa	0-500 psi 0-35.2 kgf/cm ² 0-1018 inHg 0-3.45 MPa	0-1000 psi 0-70.3 kgf/cm ² 0-2036 inHg 0-6.89 MPa	0-3000 psi 0-210.9 kgf/cm ² 0-20.68 MPa
Resolution	0.01 psi 0.001 kgf/cm ² 0.1 inHg 0.1 kPa 1 in w.c. 1 mbar 0.001 MPa	0.1 psi 0.001 kgf/cm ² 0.1 inHg 0.1 kPa 1 in w.c. 1 mbar 0.001 MPa	0.1 psi 0.01 kgf/cm ² 0.1 inHg 1 kPa 0.001 MPa	500 psi 0.1 kgf/cm ² 1 inHg 0.01 MPa	1000 psi 0.1 kgf/cm ² 1 inHg 0.01 MPa	3000 psi 0.1 kgf/cm ² 0.01 MPa