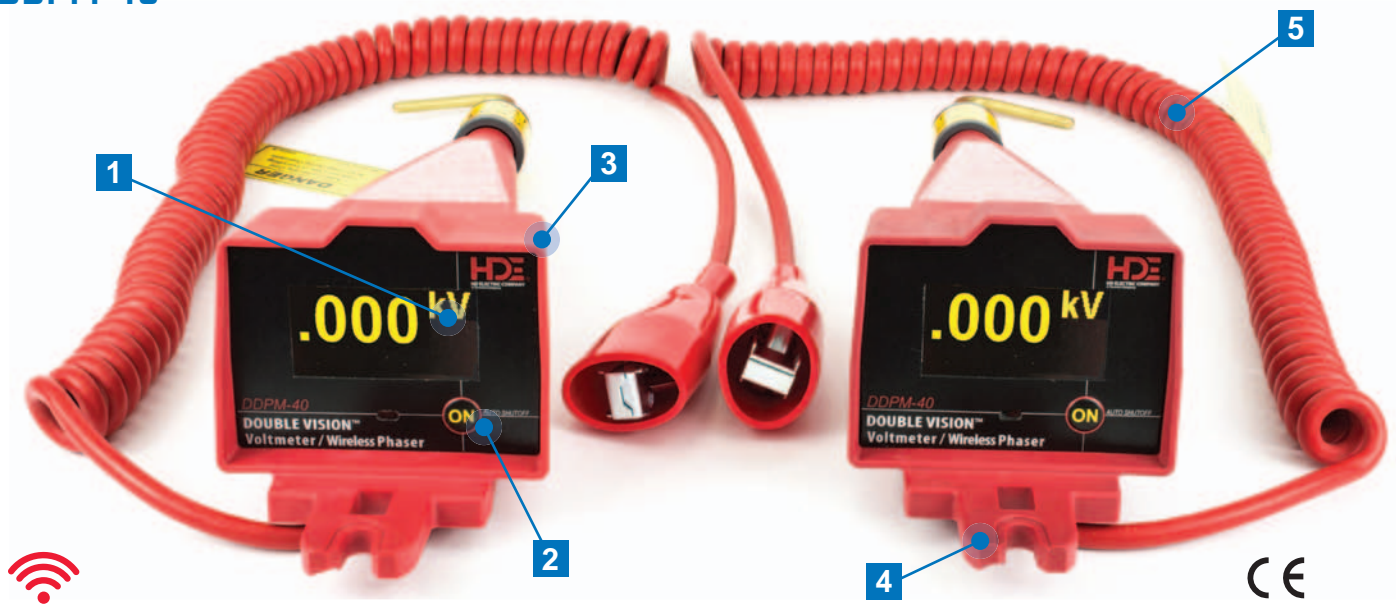


DOUBLE VISION[®] DUAL DISPLAY VOLTMETER & PHASING SET

DDPM-40



1 OVERSIZED LED DISPLAY

2 ONE-BUTTON OPERATION FOR ALL FUNCTIONS

3 ULTRA-LIGHT DURABLE HOUSING

4 UNIVERSAL SPLINE AND SHOTGUN STICK
CONNECTIONS

5 HEAVY-DUTY GROUNDING CORD

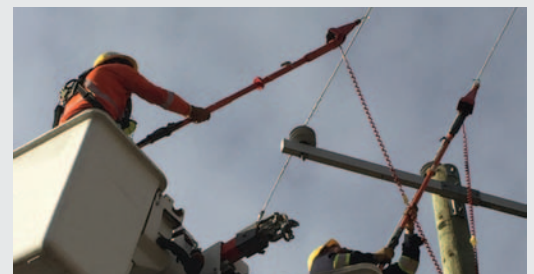
- Measures voltage from 5V to 43kV line-to-line
- Can be used individually as voltmeters or together for phasing operations up to 100 ft. (30m) apart
- Clear indication of phase angle
- Two LED displays are automatically synchronized during phasing operations
- Versatile for overhead & underground applications
- Capacitive Test Point and Peak Hold modes



Phase Angle Display



Peak Hold Mode



PROBES AND ACCESSORIES

Overhead Probes	Underground Dead Front Bushing Probes	Insulated Underground Probe	Underground Elbow Probe	Proof Tester® Voltmeter/Phaser Tester	Extension Hot Sticks
					
025-OLPS-5 (l); 025-OLPS-6 (r)	ASP-15/25 (l); ASP-35U (r)	GCP-1	EA-15/25	PT-5000B	Different Lengths and Telescopic Hot Sticks Available

SPECIFICATIONS

Model Number	DDPM-40
Operating Voltage Range	5V-43kV line-to-line, 5V-25kV line-to-ground, AC 25-1000Hz or DC
Phasing Frequency	50/60Hz
Accuracy	Within 1% of reading +/- 3 counts (line-to-ground & line-to-line measurements)
LED Numeral Height	0.7", indicates 3 digits
Battery	9V lithium or alkaline

Battery Life	8 hours of continuous use under normal conditions
Operating Temperature Range	-20°F to +120°F (-29°C to +49°C)
Weight (Without Probes)	2.25 lbs. (1.02 kg) each unit
Dimensions (Without Probes)	14" L x 4.1" H x 4.6" W (36 cm x 10 cm x 12 cm)
Coiled Cord Length	Retracted: 3.5' (1.7 m); Extended: 12' (3.6 m)
Cord Voltage Rating	Up to 20kV

ORDERING INFORMATION

PART NO.	DESCRIPTION	INCLUDED ACCESSORIES					
		025-OLPS-5	ASP-15/25	ASP-35U	PT-5000B	CS-SVM	CS-DDVM
DDPM-40S	Dual Display Wireless Phasing Meter 5V-43kV, OH Single Kit, Base	1	0	0	0	1	0
DDPM-40S/K01	Dual Display Wireless Phasing Meter 5V-43kV, OH Single Kit 1	1	0	0	1	1	0
DDPM-40S/K02	Dual Display Wireless Phasing Meter 5V-43kV, OH/UG Single Kit 1	1	1	0	1	1	0
DDPM-40S/K03	Dual Display Wireless Phasing Meter 5V-43kV, OH/UG Single Kit 2	1	1	1	1	0	1
DDPM-40	Dual Display Wireless Phasing Meter 5V-43kV, OH Kit, Base	2	0	0	0	0	1
DDPM-40/K01	Dual Display Wireless Phasing Meter 5V-43kV, OH Kit 1	2	0	0	1	0	1
DDPM-40/K02	Dual Display Wireless Phasing Meter 5V-43kV, OH/UG Kit 1	2	2	0	1	0	1
DDPM-40/K03	Dual Display Wireless Phasing Meter 5V-43kV, OH/UG Kit 2	2	2	2	1	0	1
025-OLPS-5	Overhead Brass Hook Probe						
025-OLPS-6	Overhead Brass Pigtail Probe						
ASP-15/25	15kV and 25kV Class Insulated Underground Probe for Loadbreak Bushings						
ASP-35U	35kV Insulated Underground Probe for Loadbreak Bushings Designed for Both Elastimold® and Cooper™ (RTE) Bushings						
GCP-1	General Contact Underground Distribution Probe						
EA-15/25	15kV and 25kV Class Underground Loadbreak Elbow Probe						
PT-5000B	Proof Tester® Voltmeter Tester - Confirms Proper Operation						
S-4H	4' Extension Hot Stick with Universal Splines, Foam Filled, 1-1/4" Diameter Fiberglass						
S-6H	6' Extension Hot Stick with Universal Splines, Foam Filled, 1-1/4" Diameter Fiberglass						
CS-SVM	Plastic Carrying Case for DDPM-40S and Kits						
CS-DDVM	Plastic Carrying Case for DDPM-40 and Kits						

The use of a hot stick is required. Other kits and telescopic hot sticks are available, contact HDE.