

# INTELLIDOX

Automated instrument management system



## Get more from your gas detector with unmatched performance and customization

The IntelliDoX system combines smart docking modules and Fleet Manager II software to provide automated instrument management for compatible detectors, helping you drive productivity, reliability and efficiency.

## Fast instrument management and enhanced productivity

IntelliDoX is easy to install, taking under two minutes from setup of a five module dock to the bump of your first instrument. Each module has its own operating system, LCD screen and internal pump allowing you to perform more than one operation at the same time. Whether you want to bump three devices or calibrate others - you can get more done in less time.

## Flexible configuration to meet changing needs

Configure the low and high alarm set points — plus other detector parameters — throughout the lifespan of the detector. So you can rely on your detector to always work the way you want it to.

## Efficient networking and data transfer for easy record-keeping

Use either USB or Ethernet to transfer bump tests, peak exposures and other gas-detection data.

### Bump Test Performance like no other.

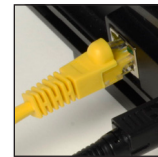
FastBump combines the functional test of a compatible gas detector together with the application of a test gas to deliver the quickest bump test in gas detection, optimizing throughput and saving calibration gas.



Easy to Use



Easy to Expand



Easy to Network

- A new level of customization for maintenance-free devices
- Configure alarm set points, track compliance of workers and more
- Flexible docks and software — expandable to five modules
- Quick and easy setup — great for turnarounds

## Compatible Detectors

- BW Clip Series
- ConneX1
- GasAlertMicroClip Series

**BW**  
Technologies  
by Honeywell

# INTELLIDOX

Automated instrument management system



Expandable up to five modules

## IntelliDoX Features:

- Bump testing, calibration, configuration, and record-keeping support for compatible detectors. User updatable settings:
  - Configure Alarm Settings
  - Schedule Bump Test and Calibration Reminders
  - Display Gas Reading During Alarm
  - Transfer Event Logs
  - Enable Non-compliance Indicator
  - Time Display Preferences
  - Hibernate Detector
  - Update Firmware
- Industry-leading FastBump test that eliminates bottlenecks, while avoiding costly purge cycles that waste gas
- Gangable up to five modules, each with its own LCD screen and keypad for independent operation
- Easy to set up with no tools required
- Easy to connect via Ethernet to a network
- USB port to easily configure dock module settings or retrieve data without network access
- Automated bump test and span calibration operation

## Options & Accessories



**Portable Kit** – Fully portable IntelliDoX test station in a Pelican case. Kit contains: 2 docking modules, ethernet cable, AC power adaptor, demand flow regulator, tubing and more.

### Multi-Inlet Key –

Configure a single IntelliDoX module to connect multiple calibration gas cylinders



## IntelliDoX Specifications

<b>Size (w x h x d)</b>	5.4 x 14.2 x 4.3 in. (13.8 x 36.2 x 10.9 cm) (individual docking module)
<b>Weight</b>	4.2 lb (1.91 kg)
<b>Power supply</b>	12 V / 8.33A ITE Power Supply
<b>Real-time clock</b>	Provides time and date stamp
<b>Communications method</b>	Two-way infrared communication between docking module and detector
<b>External interface</b>	<ul style="list-style-type: none"> <li>• 1 USB port</li> <li>• 1 Ethernet port</li> </ul>
<b>Menu navigation</b>	<ul style="list-style-type: none"> <li>• Adjust display settings</li> <li>• Adjust time and date</li> <li>• Configure gas inlets</li> <li>• Review IntelliDoX module</li> <li>• Password protected (if enabled)</li> <li>• Configure UI display language: English, French, German, Portuguese, Spanish</li> </ul>
<b>Automatic tests</b>	<ul style="list-style-type: none"> <li>• FastBump: in 10 seconds</li> <li>• Standard bump: in 40 seconds</li> </ul>
<b>Data Storage</b>	2 GB internal
<b>Pump</b>	Independent pump in each IntelliDoX module Flow Rate: 350 ml/min
<b>Instrument Management System</b>	Fleet Manager II, version 4.0 or higher
<b>Ratings</b>	This device complies with the FCC Part 15 and ICES-003 Canadian EMI requirements. Operation is subject to the following two conditions: (1) This device may not cause harmful interference, and (2) This device must accept any interference received, including interference that may cause undesired operation.
<b>Warranty</b>	Full two year warranty

DUE TO ONGOING RESEARCH AND PRODUCT IMPROVEMENT, SPECIFICATIONS ARE SUBJECT TO CHANGE WITHOUT NOTICE.



20150108-04-EN