

REED

Model R1910

Temperature & Humidity Meter, Compact Series


Introduction

This compact thermo-hygrometer measures temperature and relative humidity. The R1910 features Data Hold and Min/Max functions and is designed for one-handed operation.

⚠ Warning:

Before using product, please read the operation manual carefully.

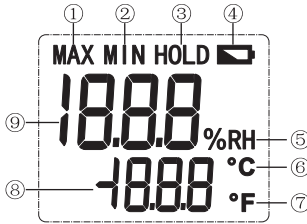
Operation Safety

1. Check the meter before using to ensure the instrument is not damaged.
2. Do not open the meter.
3. When the LCD displays  replace battery as soon as possible.
4. Remove the batteries if the instrument will not be used for an extended period of time.
5. Do not use the meter in high temperature, humidity, flammable, combustible or strong electromagnetic environments.
6. Use a soft cloth and neutral detergent to clean the instrument. Do not use strong agents or solvents.

Note: Keep thumb away from sensor when taking readings as body temperature may affect readings.

Display Description

1. Max
2. Min
3. Data Hold
4. Low Battery Indicator
5. Relative Humidity
6. °C
7. °F
8. Temp. Value
9. Humidity Value



Key Functions & Setup

ON/OFF

Press once to turn on unit. Press again to power off. Disable the product's auto power off feature by pressing and holding **HOLD** and then press the **ON/OFF** key to enable/disable auto power off, LCD will display "APO OFF" to indicate status.

°C/°F

Press this button to switch between Celsius and Fahrenheit.

MAX/MIN

Press this button to cycle through maximum, minimum and live measurement functions. Select maximum and the maximum reading will be shown; select minimum and the minimum reading will be shown.

HOLD/BL

HOLD: Press the button once to hold the measurement and press it again to continue measuring.

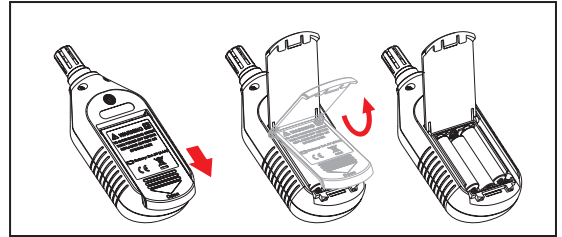
BL: Hold button to turn the backlight display on and off.

Specifications

Temp. Measuring Range:	14 to 140°F (-10 to 60°C)
Temp. Accuracy:	±2.0°F (1.0°C)
Humidity Measuring Range:	0 to 100% RH
Humidity Accuracy:	±5% RH
Humidity Resolution:	0.1% RH
Display:	Dual LCD
Backlit Display:	Yes
Data Hold:	Yes
Maximum:	Yes
Minimum:	Yes
Sampling Rate:	1 time/second
Overrange Indicator:	Yes
Auto Shut-Off:	Yes (after 5 minutes, off)
Low Battery Indicator:	Yes
Power Supply:	3 "AAA" batteries
Product Certifications:	CE
Storage Temperature:	14 to 140°F (-10 to 60°C)
Operating Humidity Range:	10 to 80%
Dimensions:	6.3 x 2 x 1.1" (155 x 50 x 28mm)
Weight:	4.2oz (102g)

Battery Installation and Replacement

1. This meter uses 3 AAA batteries. Refer to the figure below for battery installation and replacement steps.
2. Push the battery cover open in the direction of the arrow, lift the cover and remove the batteries.
3. Install new batteries in accordance of polarity indications.
4. Close the cover tightly after installing new batteries.



For service or information on this or any other REED product, contact RFFD Instruments at info@reedinstruments.com.