









AFFORDABLE, HIGH-RESOLUTION THERMAL IMAGING WITH SEEKFUSION™ TECHNOLOGY

KEY CAMERA SPECS

-  **320 x 240 Thermal Sensor**
-  **57° Field of View**
-  **-40 to 626F Temperature Measurement**
-  **SeekFusion™ Thermal + Visible**
-  **Large Color Touch Screen**
-  **Works Day & Night**



Seek ShotPRO is the most advanced thermal imaging camera for building professionals. Snap photo and video and analyze immediately with new on-board thermography tools. Add spot measurements and temperature boxes to create time-saving reports on the spot. Precisely diagnose problems with 16x higher resolution than comparably priced cameras. Take full control of photos and video by adjusting the blend between visible and thermal images. Share and stream to any smartphone or tablet over WiFi. Mount to a tripod and live stream to colleagues to tackle tougher jobs in the challenging environments. Seek ShotPRO puts durable and sleek thermal imaging expertise in your pocket.

Product Name:	Seek ShotPRO
Product Type:	Thermal Imaging Camera
Seek ShotPRO UPC & PN	UPC: 00859356006217 Part Number: SQ-AAA

Single Unit	
Included in the box:	<ul style="list-style-type: none"> • Seek ShotPRO • Wrist Lanyard • Welcome Guide • USB Cable
Device Dimensions (H x W x D)	8 x 14 x 2.8 cm 3.125 x 5.5 x 1.1 inches
Device Weight:	7.2 ounces 205 grams
Box Dimensions (H x W x D)	18 x 12 x 4.5 cm 7 x 4.75 x 1.75 inches
Box Weight:	14.5 ounces 410 grams



On-Device Analysis

Capture, edit and analyze photos in the field - all from your device.



SeekFusion™

Find problems faster with adjustable blend of visible and thermal images.



More Pixels, More Precision

Sixteen times more resolution than the competition. Best in class thermal resolution.



WiFi Streaming

Stream live video to any mobile device for collaboration and fixed monitoring.

KEY FEATURES

320 x 240 Best in Class Thermal Resolution

Identify, diagnose and report problems faster with high resolution thermal images and video

SeekFusion™ Technology

See exactly what you're looking at with combined visible and thermal images

Large Color Touch Screen

3.5" color touchscreen with 640x480 resolution so you can see more detail

WiFi Live View

Stream a live thermal view onto your smartphone or tablet over WiFi

Long-Lasting Battery Life

Best-in-class battery life of up to 4 hours continuous thermal imaging

Durable, Pocket-Sized Housing

Built with a rugged, IP54 rating

BENEFITS & USES

Easy-to-Use Interface

Diagnose problems on-the-spot and analyzes images on your device

Inspect Electrical Panels, Connections, and Fuses

Find electrical faults faster and with more confidence

Check Ventilation Systems for Proper Installation

Ensure grilles, registers, and diffusers are sealed for maximum efficiency

Spot Duct Leaks Invisible to the Human Eye

Easily scan a large ducting network to reveal the air leaks

Identify Inefficient Air Handlers

Diagnose faulty equipment and improve energy efficiency

Find Missing Insulation

Easily find missing or poor-performing insulation in seconds

Find Quality Products Online at:

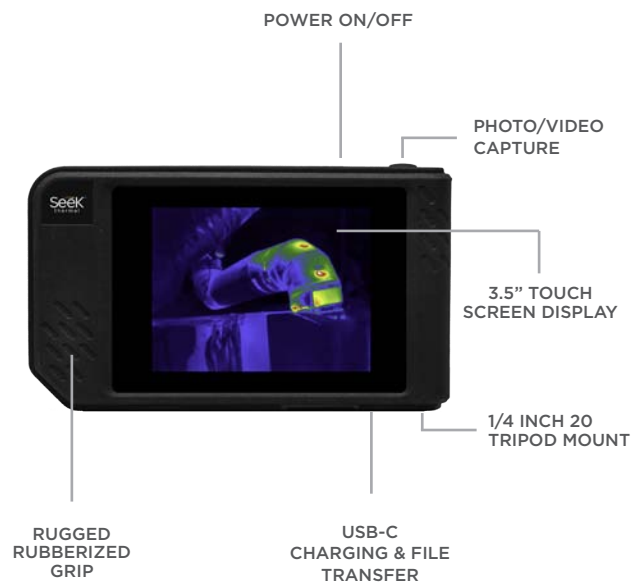
www.GlobalTestSupply.com

sales@GlobalTestSupply.com

TECHNICAL SUMMARY

SPECIFICATIONS	DESCRIPTION
Thermal Sensor	320 x 240 (76,800 pixels)
SeekFusion™	Yes
Field of View	57 Degree FOV
Temperature Range	-40°F to 626°F (-40°C to 330°C)
Frame Rate	< 9 Hz
Focus	Fixed Focus
Light/Flash	Yes
Display	3.5" Color Display (648 x 480 Resolution)
Microbolometer	Vanadium Oxide
Thermal Sensitivity	< 70 mK
Spectral Range	7.5 - 14 Microns
User Interface	Intuitive Touch Screen
Temp. Display Scale	Fahrenheit, Celsius or Kelvin
Color Palettes	White, Black, Tyrian, Spectra, Iron, Prism, Amber & Hi
Storage Media	4GB Internal Storage
Battery	Up to 4 Hours Thermal Imaging
WiFi	WiFi enabled. Connect & stream via SeekView app

OVERVIEW



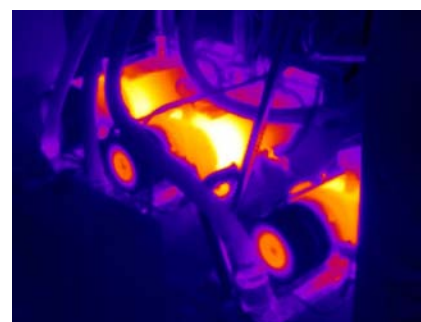
SEEKFUSION™



VISIBLE IMAGE



SEEKFUSION™ IMAGE



THERMAL IMAGE

