

Force Recorder Data Acquisition Software

Light: ZT-RL

Standard: ZT-RS

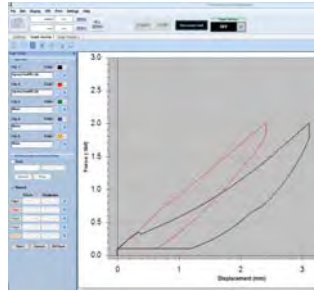
Pro: ZT-RP

Force Recorder force analysis software interfaces with Imada ZT Series (USB) force gauges. Program, save or import saved gauge programming from the software.

Force Recorder captures and processes 2,000 data per second (not just the peak) and generates force vs. time profile graphs with statistics. In addition to force vs. time, Force Recorder Pro captures force vs. displacement data using a ZTA gauge.

Zoom into any part of the graph to see individual data points at intervals of 0.5 mS. Mouse over data points to display their force value.

Further analysis can be done on the entire range or by selecting part of the graph to detect the first peak or generate statistics within that time interval. Compare and align multiple graphs. Save graphs or export data to CSV format. Force Recorder offers a new toolbox to analyze force data.



Hardware/Software Requirements

OS: Windows XP / Vista / 7 (32bit/64bit)

CPU: Pentium 4 (1GHz or higher) or later

RAM: 2GB or greater

Hard Disk: 10GB minimum (dependent on test variables and duration)

Supported Platform: .NET Framework 4.0 Client Profile or later*

Display Resolution: 1024 x 768 or greater

Force Gauge: Digital Force Gauge ZT series

Port: USB 1.1 / 2.0 (Not compatible with USB 3.0)

Cable: Standard USB A to Mini-B cable (comes with ZT gauge)

* Windows 7 includes .NET Framework 4.0



Force Recorder Features			
Version	Light	Standard	Professional
Graph Type	Force vs. Time	Force vs. Time	Force vs. Time, Force vs. Displacement (with ZTA gauge & acc.)
Data transfer rate	2000 data/sec	2000 data/sec	2000 data/sec
Maximum Data Points	7.2 million	7.2 million	7.2 million
Graph Overlay Function	—	•	•
Trigger Function	—	•	•
Point Marking	—	•	•
Border Line Function	—	•	•
Graph Editing	—	•	•
Graph Navigation	•	•	•
Statistics Output	•	•	•
Comment Function	•	•	•
Note Function	—	•	•
Print	•	•	•
Program Gauge Functions	•	•	•

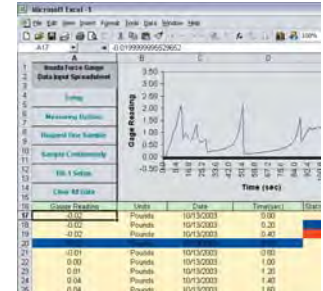
www.imada.com

Data Acquisition Software

Series SW

- For Force, Displacement and Torque
- Full SPC and graphing capabilities
- Calculates statistical data

Use SW software to capture and analyze real-time data from force or torque gauges with an RS-232 port. A running log of all the data is displayed along with a chart. Calculate max/min, average, and standard deviation.



Requirements: Force or torque gauge with RS-232 port, data cable, Pentium or equivalent computer with 32MB RAM or better, a mouse and approximately 1 MB hard disk space. Excel 97 or later.

SW-1X for Imada gauges

SW-1SV-USB for Cedar gauges

SW-2X for force and displacement

Imada Gauges	Cable
DS2	CB-101 (Analog)
ZTS, ZTA	CB-108, CB-118
HTG2, DTX2	CB-104 (Analog)
DS2	CB-203 (RS232)
ZTS, ZTA	CB-208 (RS232)
HTG2, DTX2	CB-204 (RS232)
DS2	CB-301 (Digimatic)
ZTS, ZTA	CB-308 (Digimatic)
HTG2, DTX2	CB-304 (Digimatic)
Distance Meter Cable	905691

Cedar Gauges	Cable
DID-4, DIW-15, DIW-20, DIW-75, DIW-120	SS-209
DIS-RL, SERIES i, DIS-IP, DI-1M, DI-4B-25, DI-12-SL, NTS-6	SS-208

DB Data Buttons

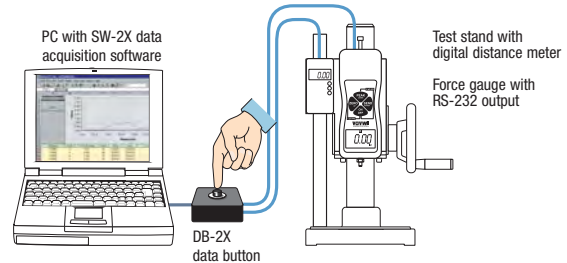
DB data buttons work with SW software to automate data collection from Imada force or torque gauges. Enter peak measurements into the spreadsheet and 'zero' the gauge with a touch of the button. Minimize computer time and mouse usage.



DB-1X One channel model collects force or torque data

DB-2X Two channel model collects both force and displacement data (use with test stands equipped with digital distance meters).

DB-4 One channel Digimatic data button



1-800-373-9989

27